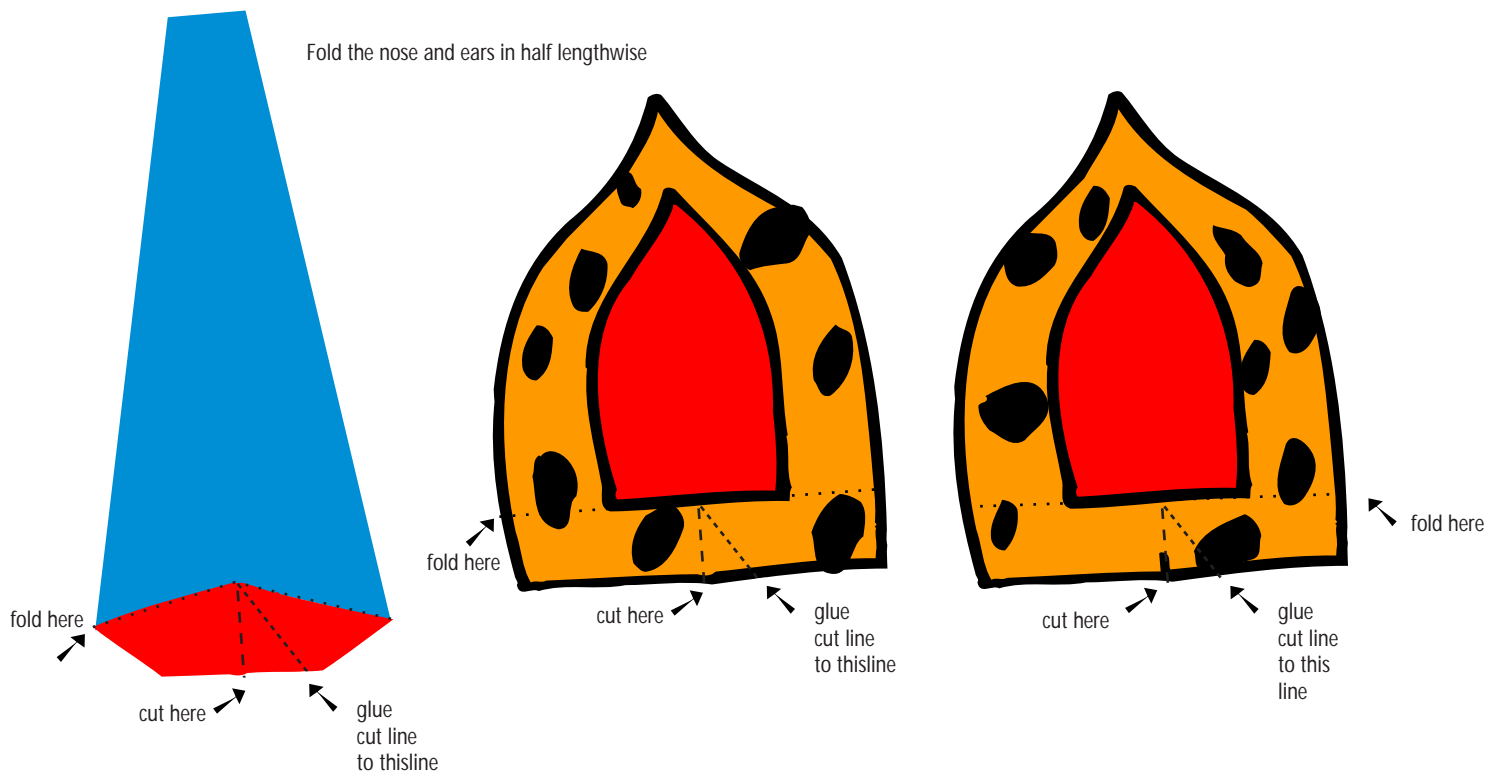


Make a Carnival Mask

by Pentewa Interactive



Materials

1. White paper 8.5" x 11" — the heaviest paper that your printer accepts will work the best.
2. Scissors
3. Glue
4. Paints, markers or crayons (optional)

Instructions

1. Print out the mask in either color or black and white. You will need two pieces of paper per mask.
2. If you chose to print out a mask in black and white, go ahead and color the mask.
3. Cut out all the pieces for your mask.
4. Cut along the indicated lines at the upper and lower corners of the mask face.
5. Cut along the indicated lines at the bottom of the ears and the nose.
6. Fold the ears and the nose in half lengthwise.
7. Fold the bottoms of the nose and ears as indicated on the print out.
8. Overlap the bottoms of the nose and ears as indicated on the print out and glue them.
9. Glue the nose and ears onto the mask.